



**VELUX®**

# World-Leading Skylights

April 2025 Product Information & Price List  
Skylights, Sun Tunnels, Roof Windows & Accessories

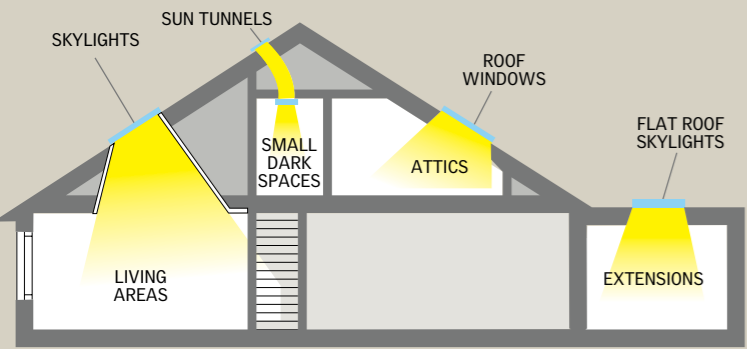


# Contents

- 4** Pitched Roof Skylights
  - FS** Fixed Skylight
  - VS** Manual Skylight
  - VSE** Electric Skylight
  - VSS** Solar skylight
  
- 8** Flat Roof Skylights
  - FCM** Fixed Skylight
  - VCM** Manual Skylight
  - VCS** Solar skylight
  
- 12** Roof Windows
  - GGU** Center-Pivot
  - GGU** Triple Glazed
  
- 14** Sun Tunnels
  - TWR** Rigid
  - TCR** Rigid
  - TWF** Flexible
  
- 16** Blinds
  - Honeycomb Blackout
  - Pleated Translucent
  
- 18** Flashing
  - VELUX Single Unit Flashing
  - VELUX Combination Flashing
  - Custom Flashing
  
- 20** Light Shafts
  
- 21** Accessories
  - Manual Controls
  - Electric Controls
  - VELUX ACTIVE
  
- 22** Price List and Sizes



Transforming Spaces



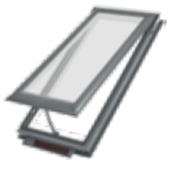
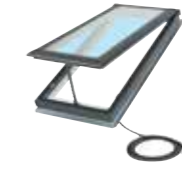
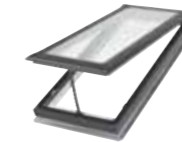


## Pitched Roof Skylights



Designed to bring daylight and fresh air into any room, our pitched roof skylights are ideal for pitched roofs over 15° and can be easily installed on most roofing types using either VELUX EDW flashing or custom flashing.

Crafted with a durable timber frame, they combine strength, style, and performance—helping to transform your home with the beauty of natural light.



FIXED SKYLIGHT (FS)	MANUAL SKYLIGHT (VS)	ELECTRIC SKYLIGHT (VSE)	SOLAR SKYLIGHT (VSS)
<b>NATURAL LIGHT:</b> Contributes toward NZBC - G7 (building code) regulations requiring natural light			
✓	✓	✓	✓
<b>MADE FOR NEW ZEALAND:</b> Tested to guarantee reliability and to meet all relevant New Zealand standards			
✓	✓	✓	✓
<b>DESIGN FLEXIBILITY:</b> Without vertical windows, walls can be utilised for storage, decoration, appliances, and have added privacy			
✓	✓	✓	✓
<b>VENTILATION:</b> Contributes toward NZBC - G4 (building code) regulations requiring ventilation			
	✓	✓	✓
<b>REDUCED DEPENDENCE ON A/C:</b> Reduce the need to install A/C units by building homes that naturally ventilate rising heat			
	✓	✓	✓
<b>REDUCE MOISTURE:</b> Ventilate in kitchens to remove steam, or bathrooms for ventilation with privacy			
	✓	✓	✓
<b>REMOTE OPERATED:</b> Skylight is operated by RF wall-mounted keypad with a range of approx. 10m. Multiple skylights can be operated from 1 keypad			
		✓	✓
<b>RAIN SENSOR:</b> Skylight automatically closes when rain is detected for peace of mind (included)			
		✓	✓
<b>USES 3 PIN PLUG:</b> No hard wiring, plugs into standard power outlet located in roof cavity (2m cable provided)			
		✓	
<b>SOLAR POWERED:</b> Solar panel charges a concealed battery, allowing operation day or night			
			✓
<b>BATTERY POWER BANK:</b> Concealed battery pack charges during the day, providing up to 100 uses when fully charged			
			✓
<b>NO ELECTRICIAN REQUIRED:</b> Low voltage cables can be safely handled by anyone			
			✓

Blinds - details on page 16 & 17	FS	VS, VSE, VSS
Honeycomb Blackout	FSCD	FSCH
Pleated Translucent	FSLD	FSLH

Installation Information (refer to page 18)

Guarantee & Maintenance

Refer to <https://www.velux.co.nz/service-and-warranty/guarantee-and-maintenance>

Package inclusions

**VS** - Insect screen, operator (manual), and operating eyelet (manual controls purchased separately)

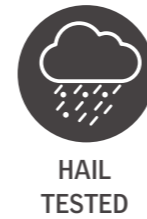
**VSE** - Insect screen, operator (electric), wall mounted keypad, rain sensor

**VSS** - Insect screen, operator (solar), battery pack, wall mounted keypad, rain sensor, solar panel



## BUILDING CODE REGULATIONS & TECHNICAL PERFORMANCE

	FIXED SKYLIGHT (FS)	MANUAL SKYLIGHT (VS)	ELECTRIC SKYLIGHT (VSE)	SOLAR SKYLIGHT (VSS)
<b>R Value (Horizontal Test Method)</b>	0.356-0.430	0.382-0.441	0.382-0.441	0.382-0.441
<b>SHGC (Solar Heat Gain Co-efficient)</b>	0.26	0.23	0.23	0.23
<b>UV PROTECTION</b> 99% Reduction of harmful UV spectrum (UVA & UVB)	✓	✓	✓	✓
<b>HAIL TEST</b> VELUX Simulated Tests ASTM E822-2009 <small>*Hailstone test not performed on solar panel. Solar panel not attached during test.</small>	✓	✓	✓	✓
<b>SKYLIGHT STANDARD (NZS4285)</b>	✓	✓	✓	✓
<b>OVERHEAD GLAZING (NZS4223.4 &amp; NZBC F2)</b> Laminated glass (standard) must be used for skylights installed 5m or more above floor level.	✓	✓	✓	✓
<b>WIND LOADS - NON-CYCLONIC REGIONS (AS4055)</b>	✓	✓	✓	✓
<b>BOUNDARY SEPARATION (NZBC C2)</b>	✓	✓	✓	✓
<b>WEATHER TIGHTNESS (NZBC E2)</b>	✓	✓	✓	✓



## Blinds - details on page 16 & 17

	FS	VS, VSE, VSS
Honeycomb Blackout	FSCD	FSCB
Pleated Translucent	FSLD	FSLH

## ACCESSORIES (Sold Separately)

### Manual Controls (VS only)

In-reach -Winder handle:	ZZZ 201
Out of reach - Extension Rof (up to 285cm):	ZCT 300
<small>(See page 21 for more information)</small>	

### Electric Controls (VSE/VSS only)

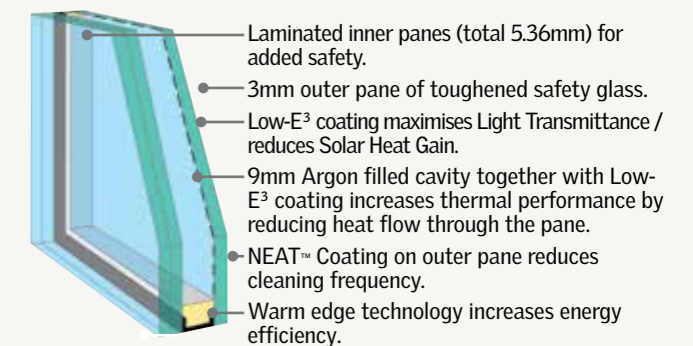
Wall Mounted Keypad (Included with VSE/VSS)

<b>VELUX ACTIVE</b>	<b>KIX 300</b>
Indoor climate control system	
<b>Smart Home Interface Unit:</b>	<b>KLF 200</b>
Building management system interface	

Read more about our electric control solutions on page 21.

## GLAZING

High Performance Double Glazing



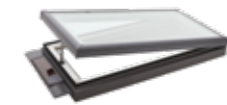


## Flat Roof Skylights



VELUX flat roof skylights are designed to provide flat roofs with a versatile and high-performance skylight, enabling the transformation of home extensions and other spaces with flat roofs when used in combination with custom flashing.

The curb mounted construction makes them an ideal replacement for aging skylights as they provide the additional benefits of hail resistance and modern double glazing.



Fixed Skylight (FCM)	Manual Skylight (VCM)	Solar Skylight (VCS)
✓	✓	✓
✓	✓	✓
✓	✓	✓
	✓	✓
	✓	✓
	✓	✓
	✓	✓
	✓	✓
		✓
		✓
		✓
		✓
		✓
		✓
		✓
		✓

Blinds - details on page 16 & 17	FCM	VCM, VCS
Honeycomb Blackout	FSCC + ZZZ 199 Tray*	FSCC
Pleated Translucent	FSLC + ZZZ 199 Tray*	FSLC

\*Requires ZZZ 199 tray

Installation information (refer to page 18)

Guarantee & Maintenance

Refer to <https://www.velux.co.nz/service-and-warranty/guarantee-and-maintenance>

Package inclusions

**VCM** - Insect screen, operator (manual), and operating eyelet (manual controls purchased separately)

**VCS** - Insect screen, operator (solar), battery pack, wall mounted keypad, rain sensor, solar panel



## BUILDING CODE REGULATIONS/TECHNICAL PERFORMANCE

	FCM	VCM	VCS
<b>R VALUE (HORIZONTAL TEST METHOD)</b>	0.362-0.438	0.374-0.443	0.374-0.443
<b>SHGC (SOLAR HEAT GAIN CO-EFFICIENT)</b>	0.27	0.24	0.24
<b>UV PROTECTION</b> 99% Reduction of harmful UV spectrum (UVA & UVB)	✓	✓	✓
<b>HAIL TEST</b> VELUX Simulated Tests ASTM E822-2009 <small>*Hailstone test not performed on solar panel. Solar panel not attached during test.</small>	✓	✓	✓
<b>Window Energy Rating Scheme (WERS)</b> Maximum 5-star summer rating	✓	✓	✓
<b>SKYLIGHT STANDARD (NZS4285)</b> <small>*Cyclone test not performed with screws provided, installation requires #8 roofing screws.</small>	✓	✓	✓
<b>OVERHEAD GLAZING (NZS4223.4 &amp; NZBC F2)</b> Laminated glass (standard) must be used for skylights installed 5m or more above floor level.	✓	✓	✓
<b>WIND LOADS - NON-CYCLONIC REGIONS (AS4055)</b>	✓	✓	✓
<b>BOUNDARY SEPARATION</b>	✓	✓	✓
<b>WEATHER TIGHTNESS (NZBC E2)</b>	✓	✓	✓



**HAIL TESTED**



**WIND LOADS**



**WEATHER TIGHT**



**CodeMark**  
CMNZ10008

\*CodeMark TBC for new sizes (FCM 3055, FCM 3072, FCM 4672)

## Blinds - details on page 16 & 17

	FCM	VCM, VCS
Honeycomb Blackout	FSCC + ZZZ 199 Tray*	FSCC
Pleated Translucent	FSLC + ZZZ 199 Tray*	FSLC

\*Requires ZZZ 199 tray

## ACCESSORIES (Sold Separately)

### Manual Controls (VCM only)

In-reach -Winder handle: ZZZ 212  
Out of reach - Extension Rod (up to 285cm): ZCT 300

(See page 21 for more information)

### Electric Controls (VCS only)

Wall Mounted Keypad (Included with VCS)

**VELUX ACTIVE** KIX 300

Indoor climate control system

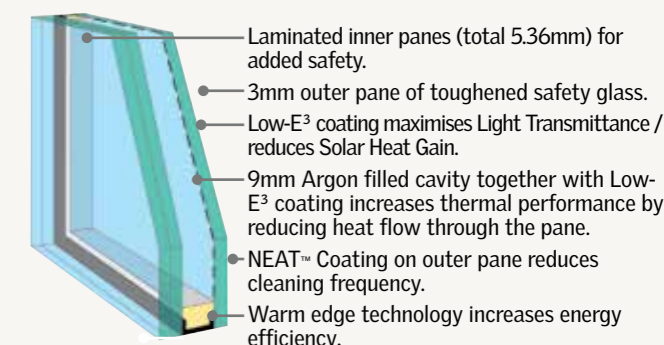
**Smart Home Interface Unit:** KLF 200

Building management system interface

**Read more about our manual and electric control solutions on page 21.**

## GLAZING

High Performance Double Glazing  
Standard across entire skylight range



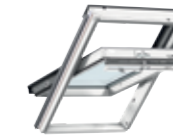
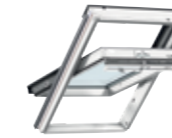
FCM 4646 & FCM 4672 outer pane is 3.9mm. 11



## Roof Windows



Specifically designed for use in attic spaces, our roof windows turn underutilized areas into an extra bedroom, retreat or home office. The opening mechanisms have been built to allow quick and easy use within reach, adding both natural light and ventilation to otherwise dark spaces. Roof windows help you maximize your home's potential, allowing your attic to become a functional extension of your living space.



GGU	GGU (Triple Glazed) - <b>NEW</b>
<b>NATURAL LIGHT:</b> Contributes toward NZBC - G7 (building code) regulations requiring natural light	✓
✓	✓
<b>CLEAN FROM INSIDE:</b> Can be rotated 180 and locked in place for cleaning the outer pane from inside	✓
✓	✓
<b>VENTILATION:</b> Contributes toward NZBC - G4 (building code) regulations requiring ventilation	✓
✓	✓
<b>PREMIUM THERMAL PERFORMANCE:</b> Triple glazing offers best in range thermal performance	✓
	✓
<b>37DB NOISE REDUCTION:</b> 3 layers of glazing offers the best noise reduction	✓
	✓
<b>IDEAL FOR COLDER CLIMATES:</b> Exceeds the requirements for New Zealand's coldest climate zones	✓
	✓

BUILDING CODE REGULATIONS/TECHNICAL PERFORMANCE	GGU	GGU (Triple Glazed)
<b>CODEMARK</b>	✓	TBC
<b>R VALUE (HORIZONTAL TEST METHOD)</b>	0.50-0.53	0.67-0.77
<b>SHGC (SOLAR HEAT GAIN CO-EFFICIENT)</b>	0.30	TBC
<b>UV PROTECTION</b>	✓	✓
99% Reduction of harmful UV spectrum (UVA & UVB)		
<b>SKYLIGHT STANDARD (NZS4285)</b>	✓	TBC
<b>OVERHEAD GLAZING (NZS4223.4 &amp; NZBC F2)</b>	✓	✓
<b>BOUNDARY SEPARATION</b>	✓	✓
<b>Blinds - details on page 16 &amp; 17</b>	GGU	GGU (Triple Glazed)
DUO Blind	DFD	DFD

Installation Information (refer to page 18)

Guarantee & Maintenance

Refer to <https://www.velux.co.nz/service-and-warranty/guarantee-and-maintenance>

Automation products available, contact VELUX for more information



## Sun Tunnels

When a traditional skylight isn't an option, sun tunnels offer the perfect alternative. Designed for tight spaces like walk-in robes, pantries, and powder rooms, they provide natural light to spaces where a traditional skylight wouldn't fit or when the roof cavity has obstructions. With minimal structural changes required, they are a quick and cost-effective way to brighten dark areas when you don't want to rely on artificial lighting.



### SUITABLE FOR ROOFING TYPE

PRODUCT	TWR	TCR	TWF
Suitable for roof pitches	15-60°	0-60°	15-60°
Tunnel diameter - 350mm	✓	✓	✓
Highly reflective shaft provides up to 3x as much light compared to TWF	✓	✓	
Flexible tunnel allows installation even when obstructions in the roof cavity exist			✓
Suited for Membrane and Tray roofs		✓	



### CEILING DIFFUSER

#### EASY TO CLEAN

Threaded diffuser screws on and off allowing for easy removal for cleaning.

#### EDGE GLOW

A clear ring on the diffuser's circumference throws light further.

### BUILDING CODE REGULATIONS/TECHNICAL PERFORMANCE

	TWR	TCR	TWF
<b>CODEMARK</b>	Yes	Yes	Yes
<b>R VALUE (HORIZONTAL TEST METHOD)</b>	0.33	0.33	0.33
<b>SKYLIGHT STANDARD (AS4285)</b>	Yes *Except Cyclonic Wind Pressure	TBC	Yes *Except Cyclonic Wind Pressure



#### Installation Information (refer to page 18)

TCR requires custom flashing.

#### Guarantee & Maintenance

Refer to <https://www.velux.co.nz/service-and-warranty/guarantee-and-maintenance>

#### Package Inclusions

**TWF** - Integrated flashing, 1500mm flexible tunnel, ceiling diffuser

**TWR** - Integrated flashing, 1700mm rigid tunnel including 2x 45° 'elbows', ceiling diffuser

**TCR** - 1150mm rigid tunnel including 2x 45° 'elbows', ceiling diffuser





**PERFECT FIT**  
Designed for seamless integration with VELUX skylights.



**SOLAR POWERED**  
VELUX offers a range of solar powered blinds for most products.



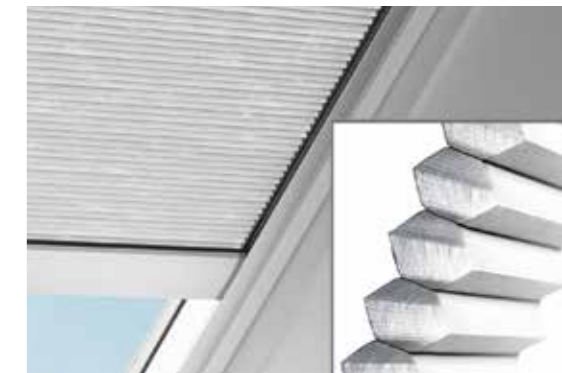
**EASY OPERATION**  
Open with the press of a button with keypad provided.

### Honeycomb Blackout - Ultimate Light Control & Insulation

For those who want superior thermal comfort and light blocking.

- Double-layered fabric for superior insulation – Keeps your home cooler in summer and warmer in winter.
- Room darkening effect – Ideal for bedrooms and media rooms.
- Modern, sleek design – Neatly retracts for a clean look when not in use.

*Best for: Bedrooms, Home Offices, Media Rooms*



### Pleated Translucent – Soft Light & Privacy

For those who love diffused or softer natural light.

- Gently diffuses daylight – Reduces glare while maintaining a bright, airy feel.
- Flexible light control – Adjustable to any position on the skylight.
- Elegant fabric texture – Adds softness and warmth to any room.

*Best for: Living Rooms, Kitchens & Bathrooms*



Blind	Light Reduction	Heat Reduction
Honeycomb Blackout	98%	70%
Pleated Translucent	40%	27%

## Blinds Make the Difference

No window is complete without a blind and the same is true of skylights. VELUX blinds are tailored to perfectly fit VELUX skylights, giving you control at your fingertips.

Whether you're looking for a solution to soften natural light or provide total blackout, our range of blinds provides the ideal solution. Choose from our Honeycomb or Pleated Translucent blinds to complete your skylight installation.

BLIND OPTIONS	FS	VS, VSE, VSS	FCM	VCM, VCS	GGU
Manual DUO Blind (Combines both the flat blackout and translucent materials)					DFD
Solar Honeycomb Blackout	FSCD	FSCH	FSCC + ZZZ 199 Tray*	FSCC	
Solar Pleated Translucent	FSLD	FSLH	FSLC + ZZZ 199 Tray*	FSLC	

\*Requires ZZZ 199 tray to install blind

Additional colours available upon request. Contact VELUX for more information.





## Custom Flashing

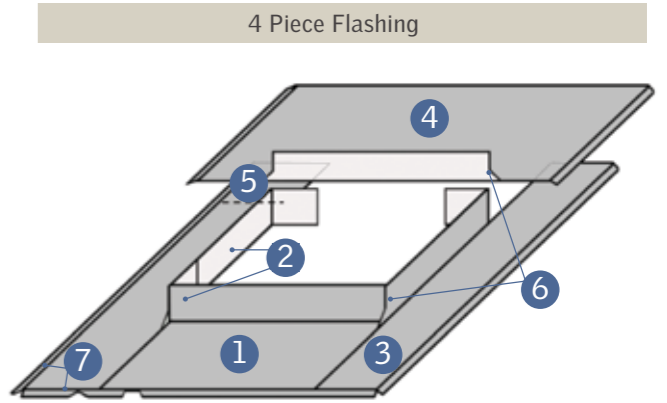
### GENERAL PRINCIPLES TO A 4 PIECE FLASHING

- 1 Length of flashing should extend at least 250mm below the skylight
- 2 Upstand height should be a minimum of 110mm for metal & 150mm for membrane
- 3 Flashing width should cover at least 2 ribs of your roofing material
- 4 Where possible, dry pan the flashing to the ridge line
- 5 For best results, add a thin line of silicone between flashing overlaps
- 6 Add diverters on each corner to direct water away from flashing joints
- 7 Add turn downs and cut outs to flashing edges to provide a tight seal against roofing material

### FLAT ROOF SKYLIGHTS CONSIDERATIONS

Flat roof skylights are designed with a curb for seamless integration with custom-made watershed flashings, even on flat roofs. The curb mounted design offers a high degree of flexibility, making them suitable for all metal roofing profiles.

Although there are several ways to build the curb, VELUX recommends a timber curb for greater thermal performance and structural support (particularly for cyclonic zones).



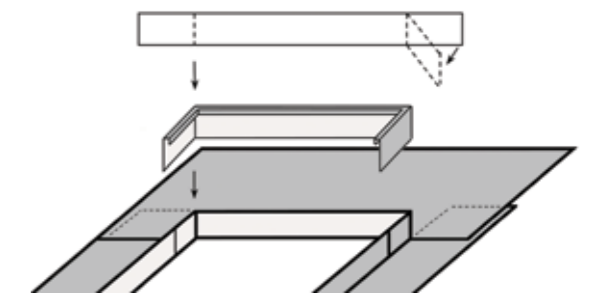
Ensure flashing is manufactured in accordance with New Zealand roofing code of practice whilst meeting the requirements of NZBC E2.

Contact VELUX for more information.

### PITCHED ROOF SKYLIGHT CONSIDERATIONS

Although VELUX supplies flashing for pitched roof skylights, you may choose to custom flash for various reasons, such as when colour matching to the roof.

*Additional top cover for header flashing needed for pitched roof skylights (made/supplied by roofer).*



## VELUX Flashing EDW

VELUX offers a range of flashing kits designed to integrate your skylights perfectly into your roofing material, ensuring the skylight is completely weathertight no matter the weather conditions.

EDW Flashing is designed to direct water through the aluminium side channels and over the apron which is designed to be molded to the shape of your tiles for a secure fit.

EDW Flashing can also be used on metal roofs that have a profile height less than 30mm, such as corrugated iron, however, custom flashing is another method often used on metal roofs. VELUX offers a range of EDL flashing suitable for slate roofs. EDL flashing offers a stepped flashing that interlock with each row of your slate/shingle roof material.

VELUX skylights can be coupled together using 'combi' flashing in a variety of configurations that allows you to design inspiring skylight features in your home.

# Light Shafts

## Why Getting it Right Matters

The internal lightshaft is one of the most crucial elements for your skylight installer to get right. It plays a major role in how the skylight will look and function. A well-designed lightshaft not only enhances the look of your skylight but also maximises the natural light from your skylight. When done correctly, it can transform a space, making it feel brighter, more open, and visually stunning.



### Splaying the Shaft

The angle and size of the lightshaft are key factors in determining how light enters the room. Splaying the shaft—angling the sides outward—creates a larger footprint on the ceiling. By creating a wider opening with the lightshaft you have a better view to the sky and maximise the amount of natural light entering the room.

### Refining the Finish

In cathedral ceilings, where exposed trusses are present, or bulkheads between multiple skylights, wrapping the timber with gyprock can enhance architectural elements rather than detract from them. A detailed and well-finished bulkhead or truss wrap ensures the skylight feels like an intentional design feature rather than an afterthought.

### Think Outside the Square

A lightshaft doesn't have to mirror the shape of the skylight itself. The internal shaft can be finished in a variety of creative shapes—circles, ovals, or even star-shaped designs. This flexibility allows homeowners and designers to turn the lightshaft into a unique architectural feature, showcasing the skylight in the best light.

# Accessories

## MANUAL ACCESSORIES

### Winder Handles

VS: ZZZ 201



VCM: ZZZ 212



### Extension Rod

Telescopic Rod: ZCT 300

Adjustable telescopic rod that can be extended between 145-285cm to operate VS/VCM skylights



## ELECTRONIC ACCESSORIES

### Interface Unit: KLF 200

Interface unit management systems and 3rd party switches. KLF 200 can be set up to perform 5 independent groups of products.



### KLI Keypad

Radio frequency wall mounted keypad used to operate VELUX (AAA). Standard remote supplied with solar and electric products.



## VELUX ACTIVE

With VELUX ACTIVE, sensors continuously monitor the temperature, humidity and CO2 levels in your home and open or close your VELUX electric and solar powered products to create a healthier indoor climate. VELUX ACTIVE kit includes 1x Gateway, 1x Climate Sensor, 1x Departure Switch.



### Internet Gateway

The Gateway enables control of your VELUX products on your smart phone and connects your VELUX products, indoor climate sensor and departure switch. Takes inputs from local weather data, your smart phone, and sensors to control your VELUX products. Operates on 2.4Ghz, select the 2.4Ghz channel in dual mode on your modem.

### Climate Sensor

The indoor climate sensor continuously measures temperature, humidity and air quality (CO2 levels) in the room. 1 climate sensor is recommended per room with VELUX products; additional sensors can be purchased: KLA 300.

### Departure Switch

Tap the departure switch as you leave home if you want to turn the VELUX ACTIVE system off while you're out.

# Price List

Skylights and Roof Windows by design must be installed in the orientation pictured with each size. (exception: The FCM Models may be installed either portrait or landscape with an appropriate roofer made flashing).

## Pitched Roof Skylights



Overall frame dimension w x h mm		550x700	550x980	550x1400	780x780	780x980	780x1180	780x1400	1140x700	1140x1180
<b>Skylights</b>	Size code	C01	C04	C08	M02	M04	M06	M08	S01	S06
FS (Fixed Skylight)	RRP \$	620	690	760	770	780	850	920	830	980
VS (Manual Skylight)	RRP \$	-	1220	1310	1320	1330	1400	1480	1370	1520
VSE (Electric Skylight)	RRP \$	-	2290	2330	-	2380	2440	2520	2430	2560
VSS (Solar Powered Skylight)	RRP \$	-	2510	2550	2570	2600	2660	2750	2650	2790

Blinds	Size code	C01	C04	C08	M02	M04	M06	M08	S01	S06
FSCD (Solar Honeycomb FS)	RRP \$	690	700	720	730	750	760	770	760	790
FSLD (Solar Pleated FS)	RRP \$	690	700	720	730	750	760	770	760	790
FSCH (Solar Honeycomb VS/VSE/VSS)	RRP \$	-	700	720	730	750	760	770	760	790
FSLH (Solar Pleated VS/VSE/VSS)	RRP \$	-	700	720	730	750	760	770	760	790

Flashing	Size code	C01	C04	C08	M02	M04	M06	M08	S01	S06
EDW (Tile/Metal Roofs)	RRP \$	200	210	220	220	230	250	260	260	270
EDL (Slate/Shingle Roofs)	RRP \$	190	190	190	230	230	230	230	240	240

## Flat Roof Skylights



Overall frame dimension w x h mm		488x895	692x692	692x895	692x997	692x1302	692x1911	895x895	895x1302	895x1527	895x1959	997x997	997x1302	1302x692	1302x1302	1302x1959
<b>Skylights</b>	Size code	1430	2222	2230	2234	2246	2270	3030	3046	3055	3072	3434	3446	4622	4646	4672
FCM (Fixed Skylight)	RRP \$	580	600	620	660	720	1100	710	860	1220	1950	730	930	720	990	2160
VCM (Manual Skylight)	RRP \$	-	1480	-	1590	1660	-	1630	1820	-	-	-	-	-	1950	-
VCS (Solar Skylight)	RRP \$	-	2620	-	2700	2760	-	2730	2900	-	-	-	-	2760	3000	-

Blinds	Size code	1430	2222	2230	2234	2246	2270	3030	3046	3055	3072	3434	3446	4622	4646	4672
FSCC (Solar Honeycomb)	RRP \$	-	690	710	720	730	780	740	770	-	-	750	790	810	850	-
FSLC (Solar Pleated)	RRP \$	-	690	710	720	730	780	740	770	-	-	750	790	810	850	-

FCM Blind Trays*	Size code	1430	2222	2230	2234	2246	2270	3030	3046	3055	3072	3434	3446	4622	4646	4672
ZZZ 199	RRP \$	-	190	200	210	230	290	240	260	-	-	250	270	230	300	-

\*Requires ZZZ 199 tray to install blind to FCM

## Roof Windows



Overall frame dimension w x h mm		550x780	550x980	780x980	780x1180	780x1400	1140x1180	1140x1400
<b>Roof Windows</b>	Size code	CK02	CK04	MK04	MK06	MK08	SK06	SK08
GGU 0076 (Double Glazing)	RRP \$	870	940	1040	1150	1220	1460	1670
GGU 0066 (Triple Glazing)	RRP \$	-	1340	1440	-	1620	1860	-

Blinds	Size code	CK02	CK04	MK04	MK06	MK08	SK06	SK08
DFD (Manual DUO Blind)	RRP \$	250	270	290	320	360	380	390

Flashing	Size code	CK02	CK04	MK04	MK06	MK08	SK06	SK08
EDW (Tile/Metal Roofs)	RRP \$	190	200	230	250	260	270	280
EDL (Slate/Shingle Roofs)	RRP \$	180	190	220	240	250	260	270

## Sun Tunnels

Product	RRP \$	
TWR OK14 (350mm Rigid Sun Tunnel, Pitched Roof)	RRP \$	860
TWF OK14 (350mm Flexible Sun Tunnel, Pitched Roof)	RRP \$	610
TCR OK14 (350mm Sun Tunnel, Flat/Low-Pitch Roof)	RRP \$	980
ZTR 014 (350mm Rigid Extension 1180mm - not suitable for TWF)	RRP \$	275

## Accessories

Product	Description	RRP \$	
ZZZ 201	Winder handle (white) to operate VS opening skylights within reach	RRP \$	70
ZZZ 212	Winder handle (white) to operate VCM low-pitch opening skylights within reach	RRP \$	70
ZCT 300	Extendable rod control to operate manual opening skylights, 145cm - 285cm length	RRP \$	90
KIX 300	VELUX ACTIVE starter kit - includes 1 x internet gateway, 1 x climate sensor, 1 x departure switch	RRP \$	620
KLA 300	VELUX ACTIVE Indoor climate sensor. Additional climate sensors required to extend your VELUX ACTIVE system to additional rooms	RRP \$	245
KLF 200	Interfact Unit, Connect to third party building managements systems, sensors and switches	RRP \$	620



**VELUX®**

VELUX New Zealand Limited  
62b Princes Street, Onehunga, Auckland

0800 650 445  
[info@velux.co.nz](mailto:info@velux.co.nz)

[velux.co.nz](https://www.velux.co.nz)

The utmost care has been taken to provide accurate information. However, VELUX shall not be held responsible for any consequences arising from any errors or omissions in the catalogue nor for any damage or accidental loss resulting from the use of the information herein. VELUX reserves the right to modify, through development improvements, the products displayed in this brochure without notification.  
©2025 VELUX GROUP, VELUX®, VELUX logo are registered trademarks. V-NZ 0325